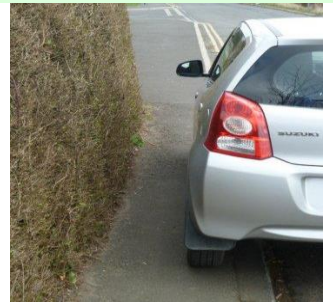




LESBURY PARISH COUNCIL NEWSLETTER (Issue 35 - July, 2013)

Changes to the Parish Council- Subsequent to the County Council and Parish elections John Wright has now taken over from Tom Wilson as the Chairman of the Parish Council with Pat Tulip remaining as Vice Chairman. The other Parish Council members are Gareth Breese, Bob Dutton, Vivien Kay, David Knowles, Roger Styring and Tom Wilson.

Parking at the Railway Station and Bilton- Once again parking has become an issue at the Station. The new car park is usually full to bursting and cars are being parked again in South View and Curly Lane; many vehicles are being parked inconsiderately and also on the footpath. Residents are reminded that technically it is an offence to park vehicles on the footpath; it causes much inconvenience to pedestrians, especially those with pushchairs, wheelchairs and those with walking difficulties. The PC is in discussion with Northumbria Police and NCC to try to improve the situation.



New extension to the cricket pavilion- you may have noticed all the activity at the Alnmouth and Lesbury Cricket Club. Almost in the blink of an eye, part of the old building has gone to be replaced by a grand, new extension. The new building offers improved changing rooms, toilets that meet modern requirement, a storage room and an umpires' room. The project has cost over £150,000 with funding arranged from different sources. The club runs a 1st team, 2nd team and a 3rd team (called Howick/Alnmouth and Lesbury), plus 5 junior teams. It hosts over 100 youngsters (boys and girls) with practice every Friday evening.

iNorthumberland- this is the NCC supported initiative to bring Superfast Broadband to our part of the north-east. Recently you may have seen a team laying cables along the A 1068 between Alnwick and Amble; they are laying the backbone of the system but the speed of availability to household and businesses in the Parish depends on how much we individually want it (currently only 11% take up on Alnmouth Exchange). iNorthumberland needs to have your support either directly or via a local group petition. John Wright has organised for John Cooper, Digital Engagement Manager, iNorthumberland to make a presentation about Superfast Broadband for Lesbury, Hipsburn and Alnmouth on Thursday 8th August at 7:30 pm in Lesbury Village Hall. If you can't come to the meeting, find out more on www.inorthumberland.org.uk where you can also register your interest.



Northumbria in Bloom- the first visit from the judges took place on April 29th and it is reported that it went well. The areas visited included Foxton, Townfoot, Meadowlands, the Lealands garden and Hipsburn and Railway Station. The next visit from the judges will be on 15th July. Since their visit, the Lealands garden has been



further enhance by the WI who have planted a *Betula jacquemontii* (Himalayan birch) tree to commemorate 90 years of WI in the Parish. This garden is adjacent to the site of their original meeting room. You may have also noticed repairs to the wall around the garden; this is to make the wall safe particularly for children who may feel the desire to climb on it.



Speeding and Speedwatch - Vehicles (including motor bikes) speeding through the village continue to be an issue. The PC is still in discussion with NCC about buying a speed indicator sign. In addition the PC was briefed at the last meeting by our community officer, Roxy Bird, who informed us that the Volunteer Community Speedwatch initiative is going to be extended following its success in Rothbury. The scheme is run in partnership with Northumbria Police and Safer Northumberland and allows local people to help reduce traffic speeds. PC Bird advised she'd be organising a meeting in Lesbury Village Hall to recruit volunteers for the Community

Speedwatch programme. (date to be announced.)

Section 106 money and PC grants- The PC has received £5000 section 106 cash from NCC as a part of the agreement with the developers allowing the building of the affordable houses at Townfoot. S106 money is used to make improvements within the local community. In consultation with NCC the PC have decided to award £2000 to Alnmouth and Lesbury Cricket Club for equipment to support their youth teams, £2000 to Lesbury Village Hall and £1000 to the Pond Field Play Park for improvements to their facilities. Cheques will be presented to these groups at the cricket club on 14 July at the official opening of their new building.

The PC has also bought the Friends of Alnmouth Station a cigarette bin which is now in use and hopefully will keep the platform tidier and stop smokers leaving their cigarette ends in the planters.



Children's Holiday Club- The churches of Alnmouth, Lesbury, Longhoughton (with Boulmer) and Howick will be running another Holiday Club this Summer in Lesbury Village Hall during the first week of the summer holidays (22 - 26 July); it is for first school children aged 4 - 9 years with older siblings if they wish. The cost is £10 for the week for the first child and £5 for other children from the same family. There will be a mixture of Bible stories, music, dancing, crafts and games. The week will finish with a family barbecue in the Vicarage Garden at Lesbury on Friday 26th July. There will be special services in St Mary's Church, Lesbury on Sunday 21st and Sunday 28th to which all children and their families will be invited. For further information and to register your child please contact: Isabel Chalmers (Tel. 01665 830362 or e mail isabelchalmers@btinternet.com) or Anne Wager-Bradley (Tel. 01665 830389 or e mail awwb@btinternet.com)

Welcome pack reminder- If you know of new arrivals to the village please contact John Wright on 830127 so that he can arrange for a Welcome Pack to be delivered to them. Meanwhile we need volunteers to deliver the Newsletter in Hipsburn Crescent and Willow Close; we are just asking for 20 minutes of your time every 2 months. If you are able to help, please contact Tom Wilson on 830522.

Nature note- Summer appears to be here (at last!). Wildlife is on the move after a late start. Tom Wilson managed to photograph this swarm of bees near to his house. However according the old rhyme-

A swarm of bees in May
Is worth a load of hay;
A swarm of bees in June
Is worth a silver spoon;
A swarm of bees in July
Is not worth a fly.



Parish Council Contacts.

Parish Clerk - Mrs Elizabeth Taylor, Rivendell, Steppay Lane, Lesbury, NE66 3PU, Tel: 01665 830040, e mail.

lesburyparishclerk@googlemail.com

Parish Council Chairman: John Wright; Tel. 01665 830127, email lesburyparish@yahoo.co.uk

Parish Council meetings are held in Lesbury Village Hall on the 4th Tuesday of the month. All residents are welcome to attend.

A full list of Parish Councillors can be found at www.lesbury-pc.org.uk